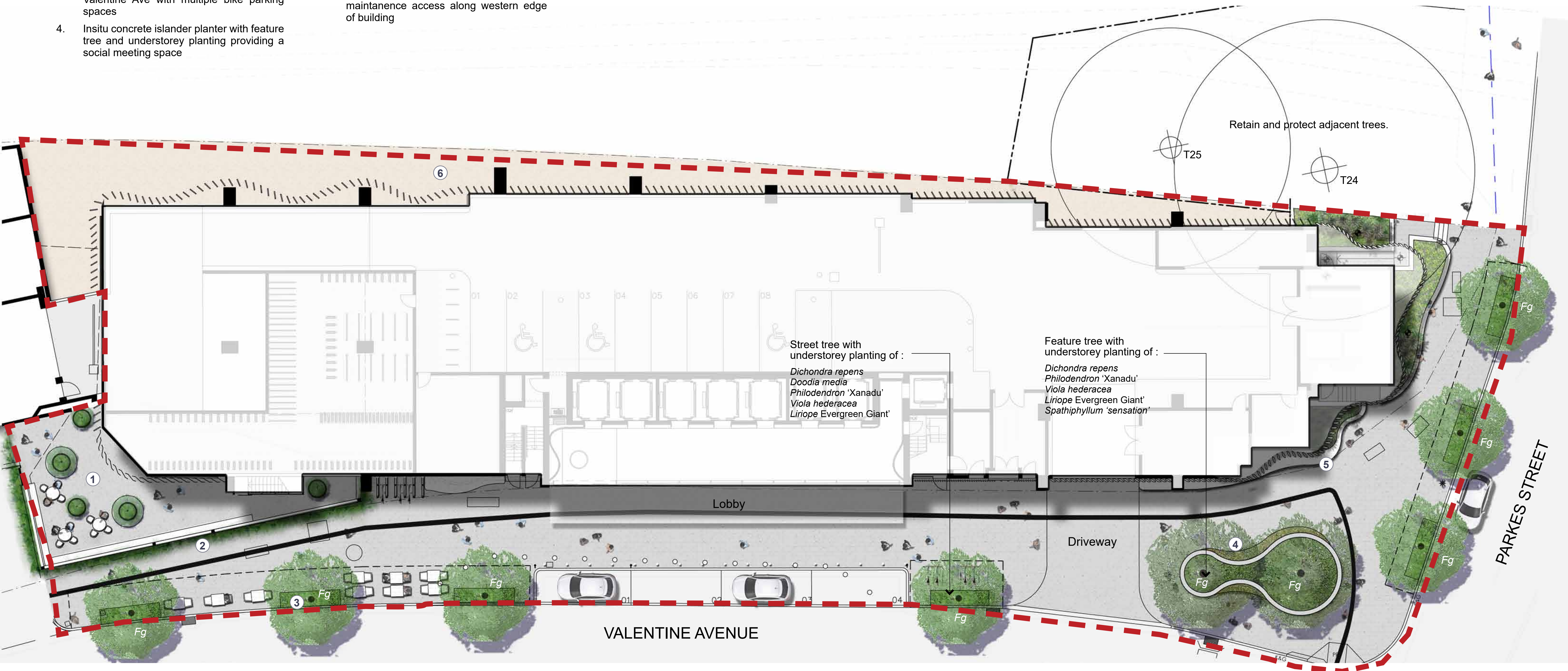


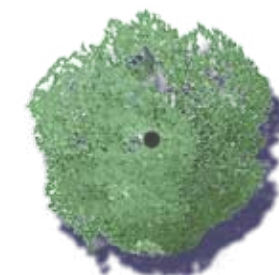
1. Outdoor cafe roof terrace seating and dining area with potted planting
2. Green wall system to cafe facade and outside face of substation. Refer to architect's detail
3. Street trees with understorey planting along Valentine Ave with multiple bike parking spaces
4. In situ concrete islander planter with feature tree and understorey planting providing a social meeting space

5. Raised insitu concrete planter with seating edge. Install multiple vertical marine cable system from building face to support flowering native climbing plant. Install to min. 4 stories, plant from base planter.
6. Decomposed granite path provides maintenance access along western edge of building

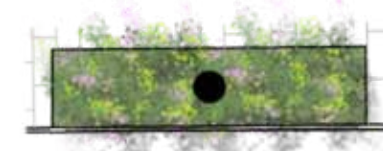


New public domain concrete unit paving to PCC Public Domain guidelines. Pebblecrete 300mm x 300mm x 60mm, honed finish.

300mm contrast paver. Refer to architect's detail.

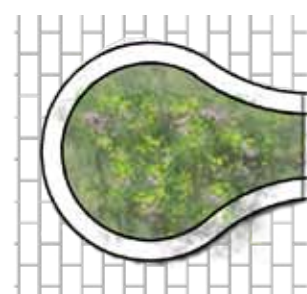


Street tree planting (*Fraxinus griffithii*). Suitable for low light conditions subject to PCC approval.



Streetscape planting beds. Refer to indicative plant schedule DA-1725-02.

Extent of Stratavault system
below to PCC Public Domain
guidelines



Insitu concrete seating and retaining walls.



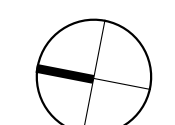
Suite 91, L5, 330 Wattle St
Ultimo NSW 2007
T. 02 9211 3744
W. www.sturtnoble.com.au
landscape architecture
environmental & urban design

PROJECT
10 VALENTINE AVENUE, PARRAMATTA

CLIENT
AUSTRALIAN UNITY

DRAWING
LANDSCAPE PLAN

DRAWING No.	ISSUE	DRAWN	DATE
DA-1725-01	D	gm	02.02.2018



0 1.5 3 6m
Scale 1:125@A1
Scale 1:250@A3

ACN: 164 245 514 ABN: 99 164 245 514
THIS DRAWING SHOULD BE READ IN CONJUNCTION WITH ALL RELEVANT
CONTRACTS, SPECIFICATIONS, REPORTS AND DRAWINGS. COPYRIGHT
OF THIS DRAWINGS IS VESTED IN STURT NOBLE ASSOCIATES PTY LTD.

INDICATIVE PLANT SCHEDULE

CODE	BOTANICAL NAME	COMMON NAME	POT SIZE	SPACING
Street Tree				
Fg	<i>Fraxinus griffithii</i>	Evergreen Ash	400L	A.S
Streetscape Planting Beds				
	<i>Asplenium nidus</i>	Birds Nest Fern	25L	750
	<i>Blechnum</i> 'Silver Lady'	Water Fern	150mm	350
	<i>Dichondra repens</i>	Kidney Weed	150mm	300
	<i>Doodia media</i>	Rasp Fern	150mm	350
	<i>Liriope</i> 'Evergreen Giant'	Giant Turf Lily	150mm	300
	<i>Neoregelia</i> sp.	Bromeliad	5L	400
	<i>Philodendron</i> 'Xanadu'	Xanadu Philodendron	5L	400
	<i>Spathiphyllum</i> 'Sensation'	Giant Peace Lily	5L	400
	<i>Viola hederacea</i>	Native Violet	150mm	300
Green Wall Planting				
	<i>Adiantum</i> sp.	Spleenwort	150mm	200
	<i>Asplenium australasicum</i>	Birds Nest Fern	150mm	200
	<i>Blechnum nudum</i>	Fishbone Water Fern	150mm	200
	<i>Cissus hypoglauca</i>	Kangaroo Vine	150mm	200
	<i>Cyrtomium falcatum</i>	Holly Fern	150mm	200
	<i>Davallia pyxidata</i>	Haresfoot Fern	150mm	200
	<i>Dianella</i> "Little Jess"	Blue Flax Lily	150mm	200
	<i>Dianella</i> "Aranda"	Flax Lily	150mm	200
	<i>Dianella</i> "Lucia"	Flax Lily	150mm	200
	<i>Doodia aspera</i>	Prickly Rasp Fern	150mm	200
	<i>Liriope</i> "Evergreen Giant"	Lily Turf	150mm	200
	<i>Neoregelia</i> sp.	Bromeliad	150mm	200
	<i>Peperomia</i> sp.	Ripple Plant	150mm	200
	<i>Philodendron oxycardium</i>		150mm	200
	<i>Philodendron</i> 'Xanadu'	Xanadu Philodendron	150mm	200
	<i>Pilea caderii</i>	Aluminium Plant	150mm	200
	<i>Pteris umbrosa</i>	Jungle Brake	150mm	200
	<i>Streptocarpus caulescens</i>	Nodding Violet	150mm	200
	<i>Viola Hederaecea</i>	Native Violet	150mm	200



GREENWALL PRECEDENT IMAGES



PUBLIC DOMAIN: STREETSCAPE PLANTING TO PCC STANDARD

INDICATIVE PLANTING IMAGES



Asplenium nidus



Dichondra repens



Neoregelia sp.



Viola hederacea



Dianella sp.



Spathiphyllum 'sensation'



Blechnum 'Silver Lady'



Liriope 'Evergreen Giant'



Philodendron 'Xanadu'



Doodia media



Fraxinus griffithii foliage



Fraxinus griffithii mature form

Suite 91, L5, 330 Wattle St
Ultimo NSW 2007
T. 02 9211 3744
W. www.sturnoble.com.au
landscape architecture
environmental & urban design

PROJECT
10 VALENTINE AVENUE, PARRAMATTA

CLIENT
AUSTRALIAN UNITY

DRAWING
PLANTING SCHEDULE & IMAGES

DRAWING No.	ISSUE	DRAWN	DATE
DA-1725-02	C	gm	02.02.2018



ACN: 164 245 514 ABN: 99 164 245 514
THIS DRAWING SHOULD BE READ IN CONJUNCTION WITH ALL RELEVANT
CONTRACTS, SPECIFICATIONS, REPORTS AND DRAWINGS. COPYRIGHT
OF THIS DRAWINGS IS VESTED IN STURT NOBLE ASSOCIATES PTY LTD.